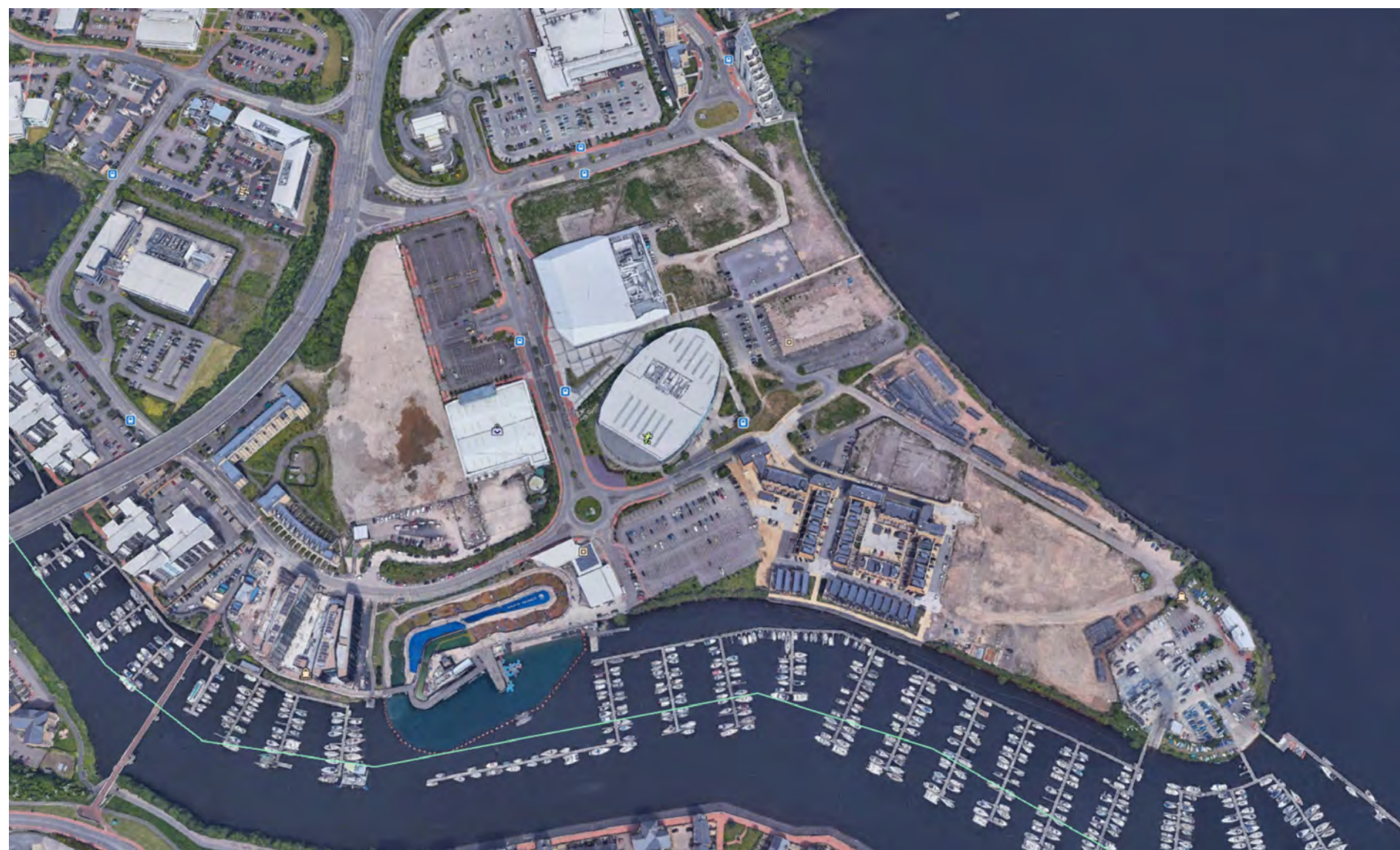


## Appendix 4



## International Sports Village Cardiff Bay

January 2021





**VISION PLAN**



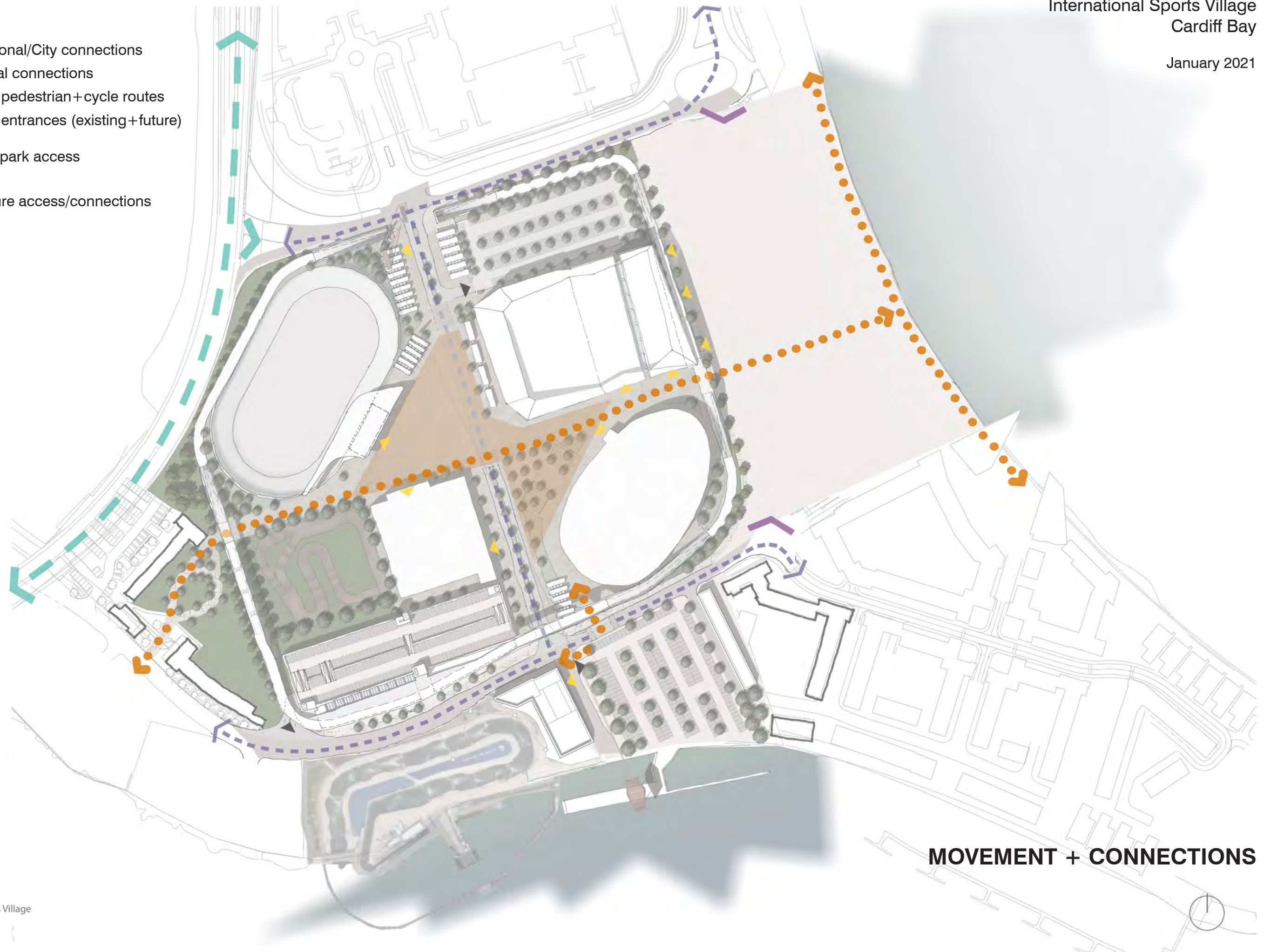
- 1 - External velodrome
- 2 - Clubhouse + ancillary
- 3 - Container City
- 4 - New surface car park
- 5 - Existing Ice Area
- 6 - Ice arena extension
- 7 - MX track
- 8 - Retail + leisure facility
- 9 - Existing pool
- 10 - New deck parking
- 11 - Existing WWRC
- 12 - Improved surface parking
- 13 - New residential block
- 14 - Zip wire terminus



**FUNCTIONS**



- National/City connections
- Local connections
- Key pedestrian+cycle routes
- Key entrances (existing+future)
- Car park access
- Future access/connections



**MOVEMENT + CONNECTIONS**



- 1 - closed circuit at ground
- 2 - ramp
- 3 - bridge
- 4 - tunnel
- 5 - elevated - supported by deck car park or extended ice arena
- 6 - containers underneath the cycle route



**CLOSED CIRCUIT LOOP STRATEGY**





**SKETCH ELEVATIONS + ARCHITECTURAL LANGUAGE/CHARACTER**







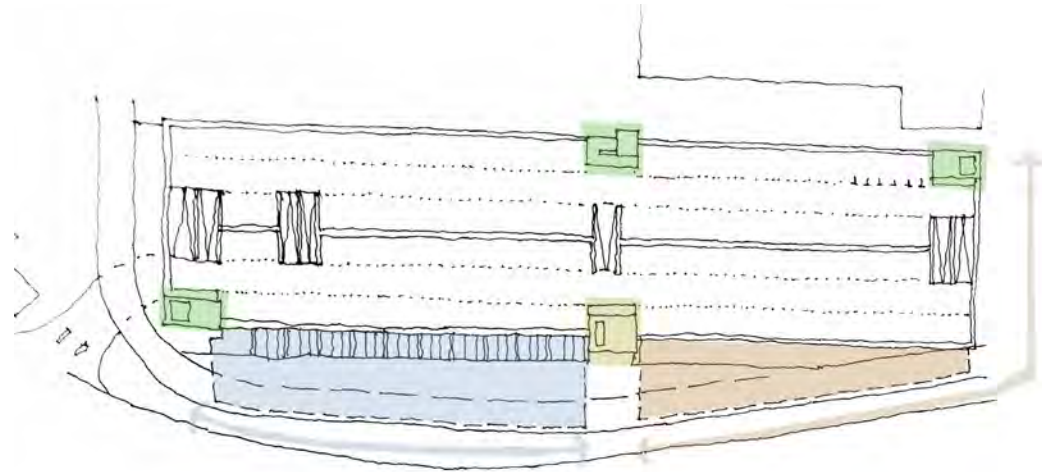
**SKETCH ELEVATION - VELODROME**

International Sports Village  
Cardiff Bay

January 2021

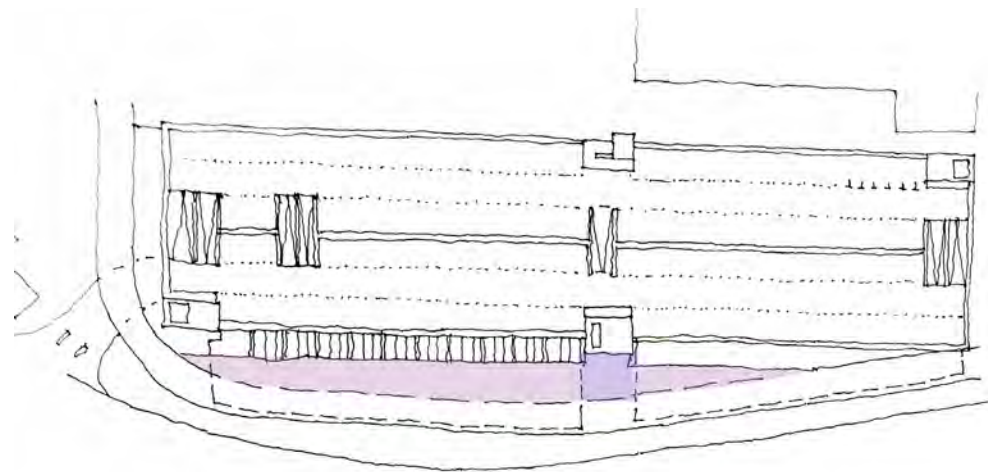


BLUE - Retail/live function  
 BROWN - Cycle hub  
 GREEN - Parking cores  
 YELLOW - Closed circuit control



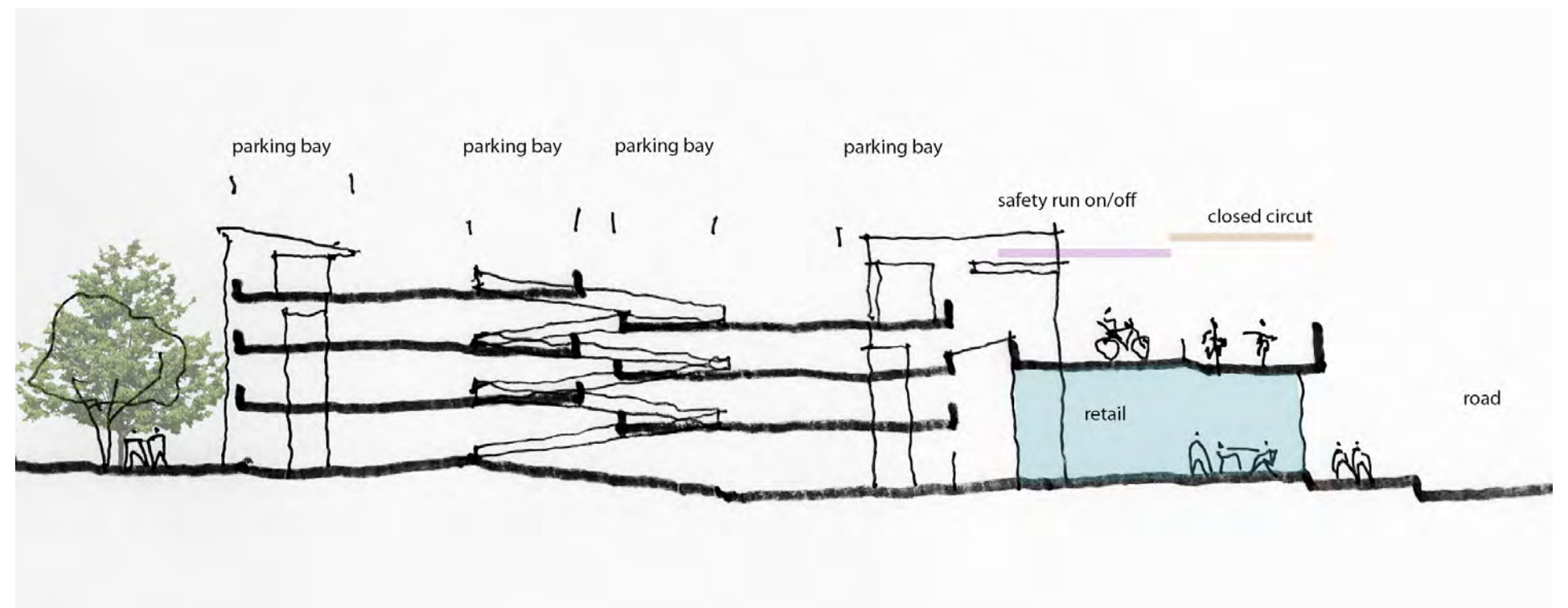
GROUND FLOOR SKETCH PLAN

PINK - Safety run-off/run-on  
 PURPLE - Safe waiting zone



SECOND FLOOR SKETCH PLAN

## SKETCH STUDIES - DECK CAR PARK



International Sports Village  
 Cardiff Bay

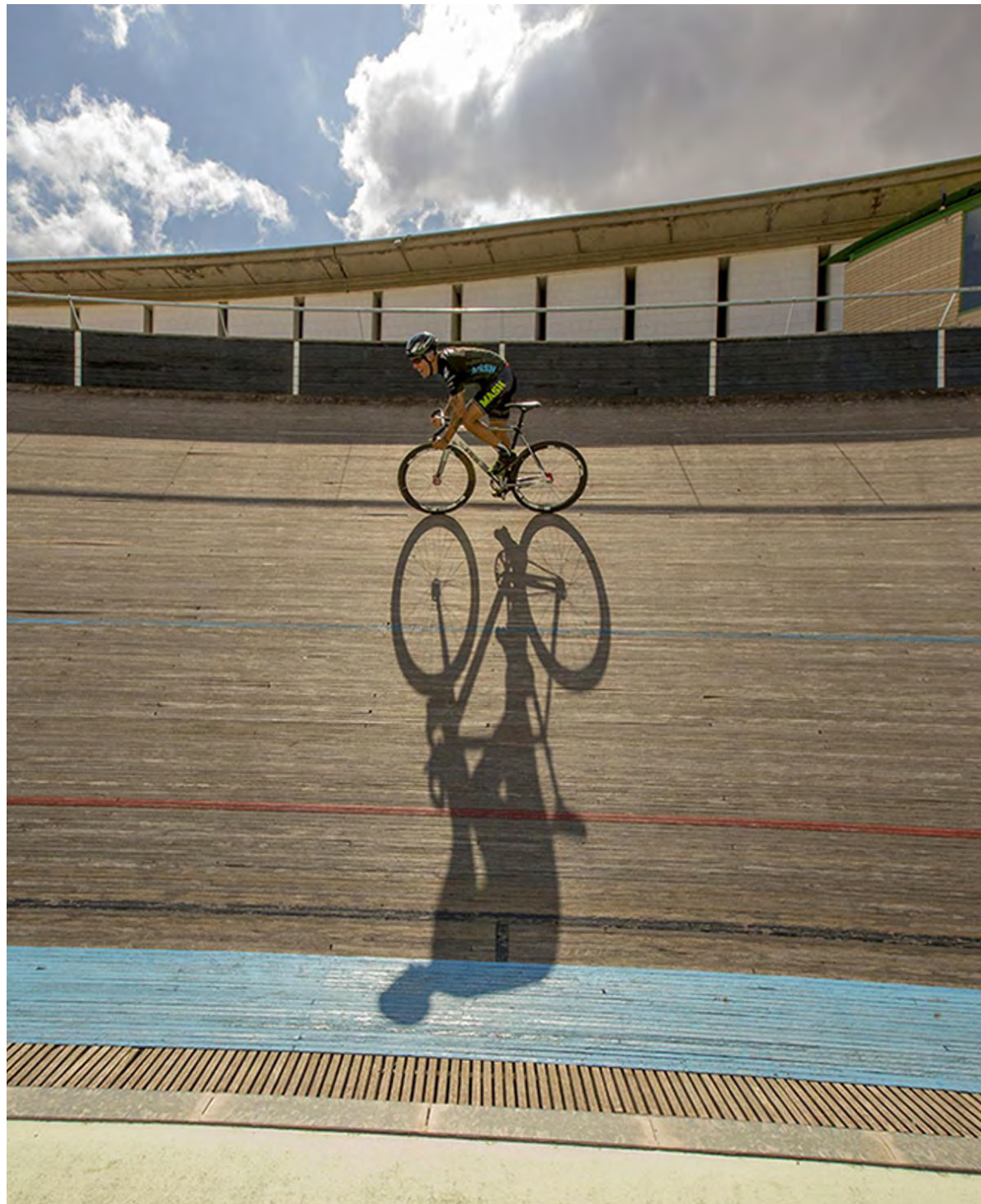
January 2021





**ARCHITECTURAL LANGUAGE/CHARACTER - PRECEDENT**



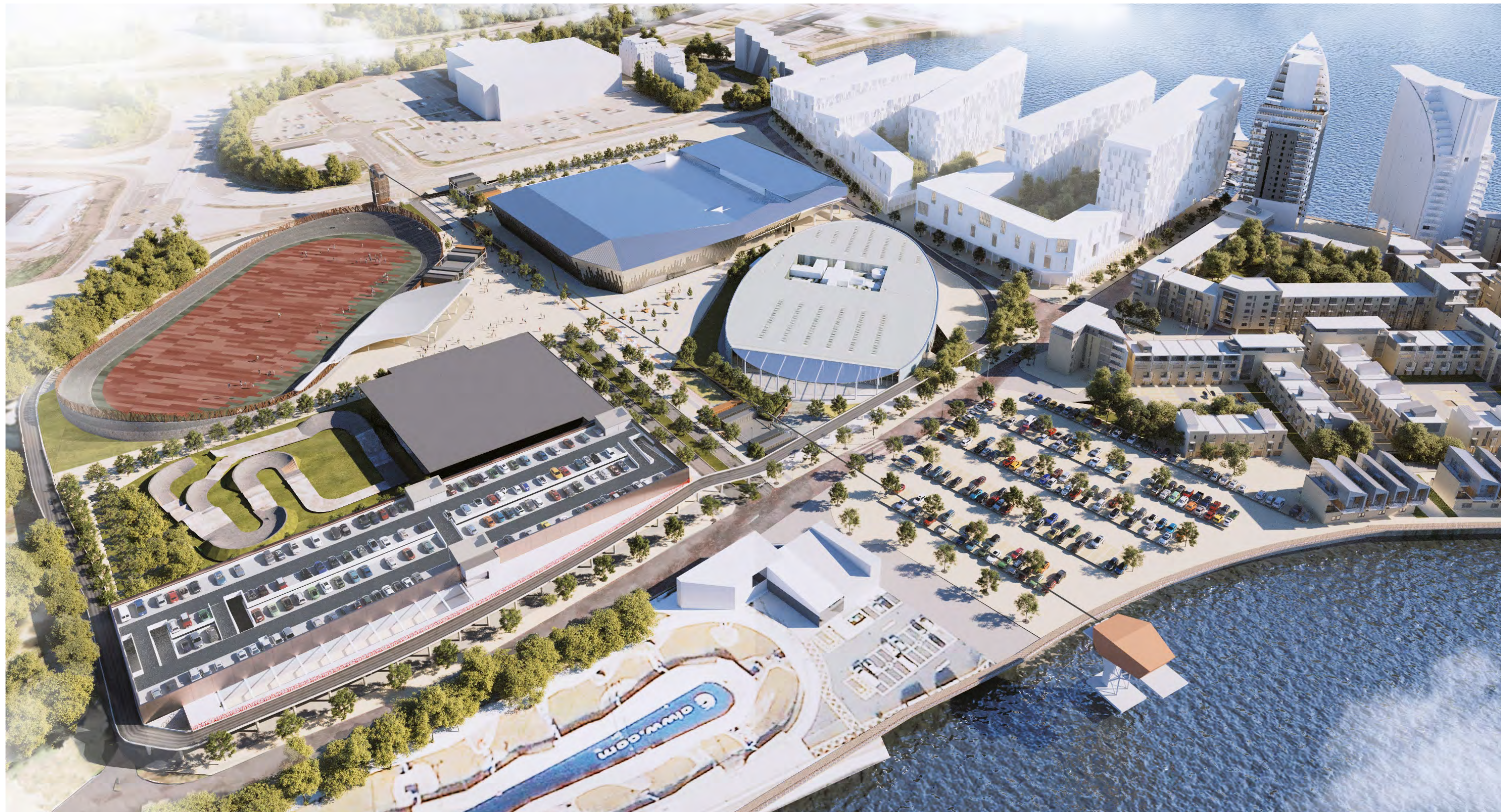


**PRECEDENT**

International Sports Village  
Cardiff Bay

January 2021





International Sports Village  
Cardiff Bay

January 2021





International Sports Village  
Cardiff Bay

January 2021





International Sports Village  
Cardiff Bay

January 2021





International Sports Village  
Cardiff Bay

January 2021